

An aerial photograph showing a vast landscape. In the foreground, a grassy ridge slopes down from the left. Below the ridge, a dense forest of evergreen trees covers a valley. The forest is interspersed with patches of lighter green, possibly grassy or cleared areas. In the far distance, rolling hills and mountains are visible under a clear sky. The text 'Bickleton Ridge– 256 acres' and 'Klickitat County' is overlaid in white with a black outline on the upper left portion of the image.

Bickleton Ridge– 256 acres

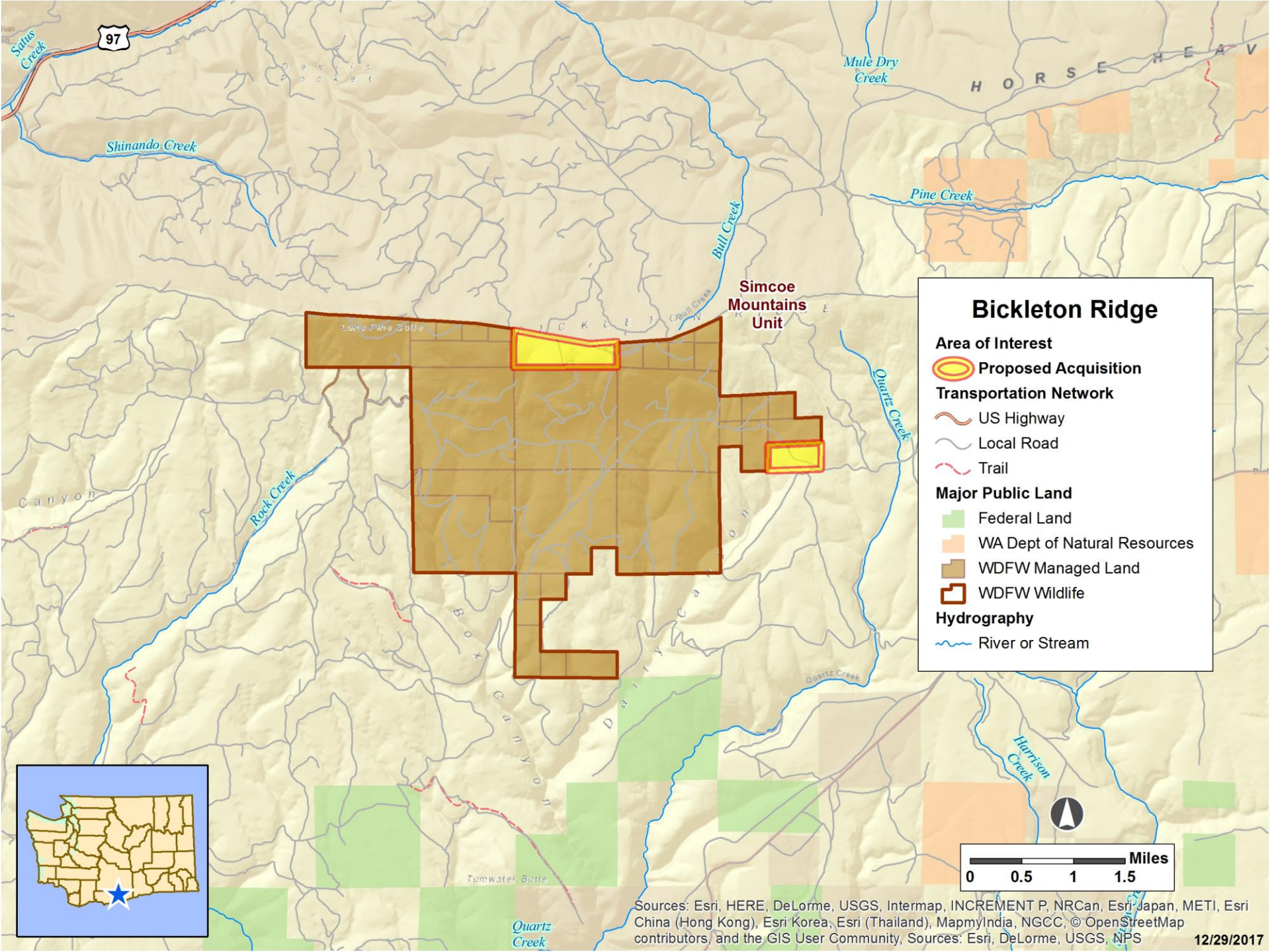
Klickitat County

Project Description: Parcels will add to the new Simcoe unit of the Klickitat Wildlife Area in Klickitat County to ensure connectivity for species and landscape integrity and support compatible working lands activities.

Species/Habitat: Benefits: Western gray squirrel, Mule deer and Black – tail deer, Oregon white oak.

Additional Project Benefits: Public access for deer hunting and other recreational opportunities, supports working lands.

Support: Central and Eastern Klickitat County Conservation Districts, Simcoe Coordinated Resource Management group, Klickitat County.



97

H O R S E H E A V

Simcoe
Mountains
Unit

Bickleton Ridge

Area of Interest

Proposed Acquisition

Transportation Network

US Highway

Local Road

Trail

Major Public Land

Federal Land

WA Dept of Natural Resources

WDFW Managed Land

WDFW Wildlife

Hydrography

River or Stream

